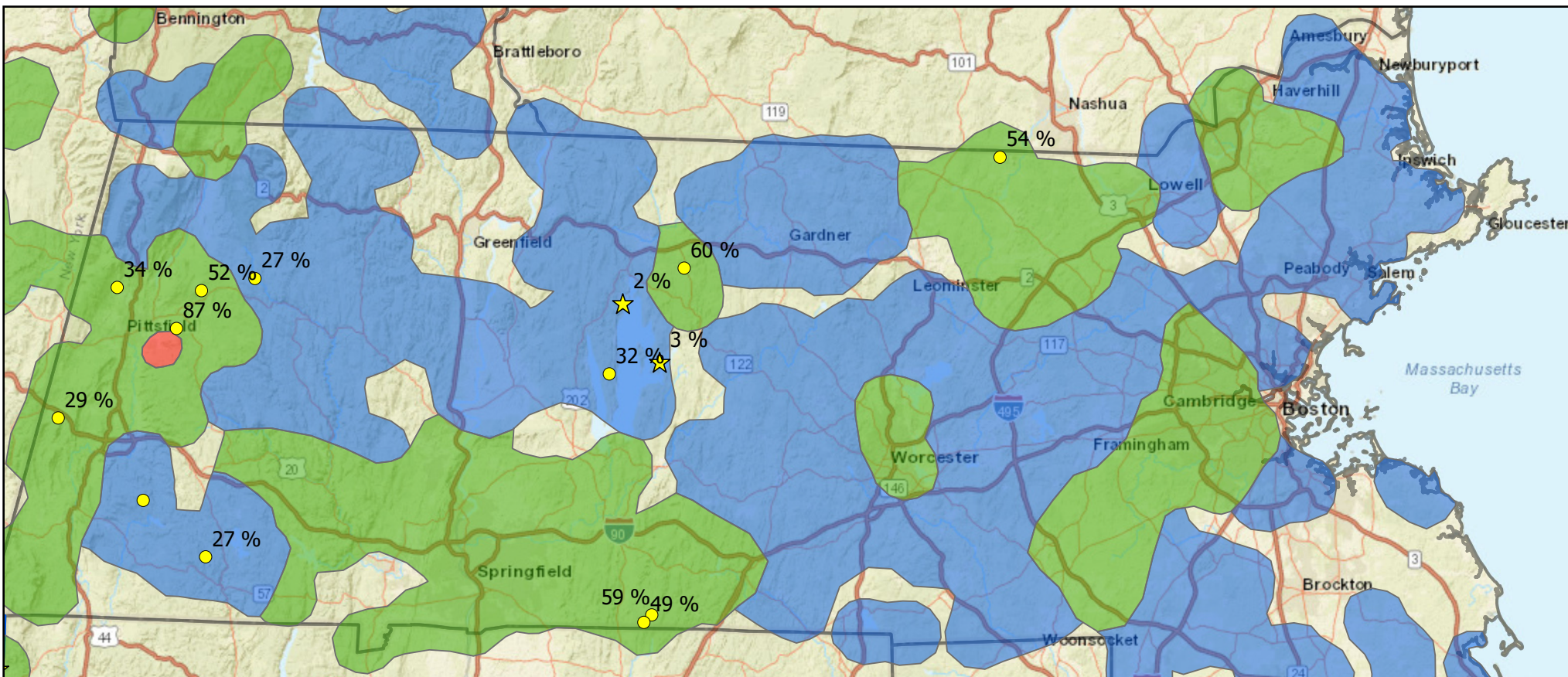


2024 Massachusetts MaMA action map



Actions to do in 2024

- ★ MaMA Plot ● Orwig et al. ash mortality data
- (% of EAB-induced cumulative ash mortality as of 2023)

Establishing MaMA Mortality Monitoring plots is helpful in any area

- Areas with no EAB detection; do EAB/Ash Surveys; if ash mortality from EAB found do RAMA assessment
- Do RAMA assessment (EAB detected 1-4 years ago; ash mortality is predicted 1-50%)
- Do RAMA assessment; if mortality $\geq 95\%$, search for Lingering Ash (EAB detected 5-11 years ago; ash mortality is predicted >50-100%)
- Search for Lingering ash (at least 12 years since EAB detection; ash mortality is predicted 100%)

(New Hampshire and Connecticut infestation data not shown)

