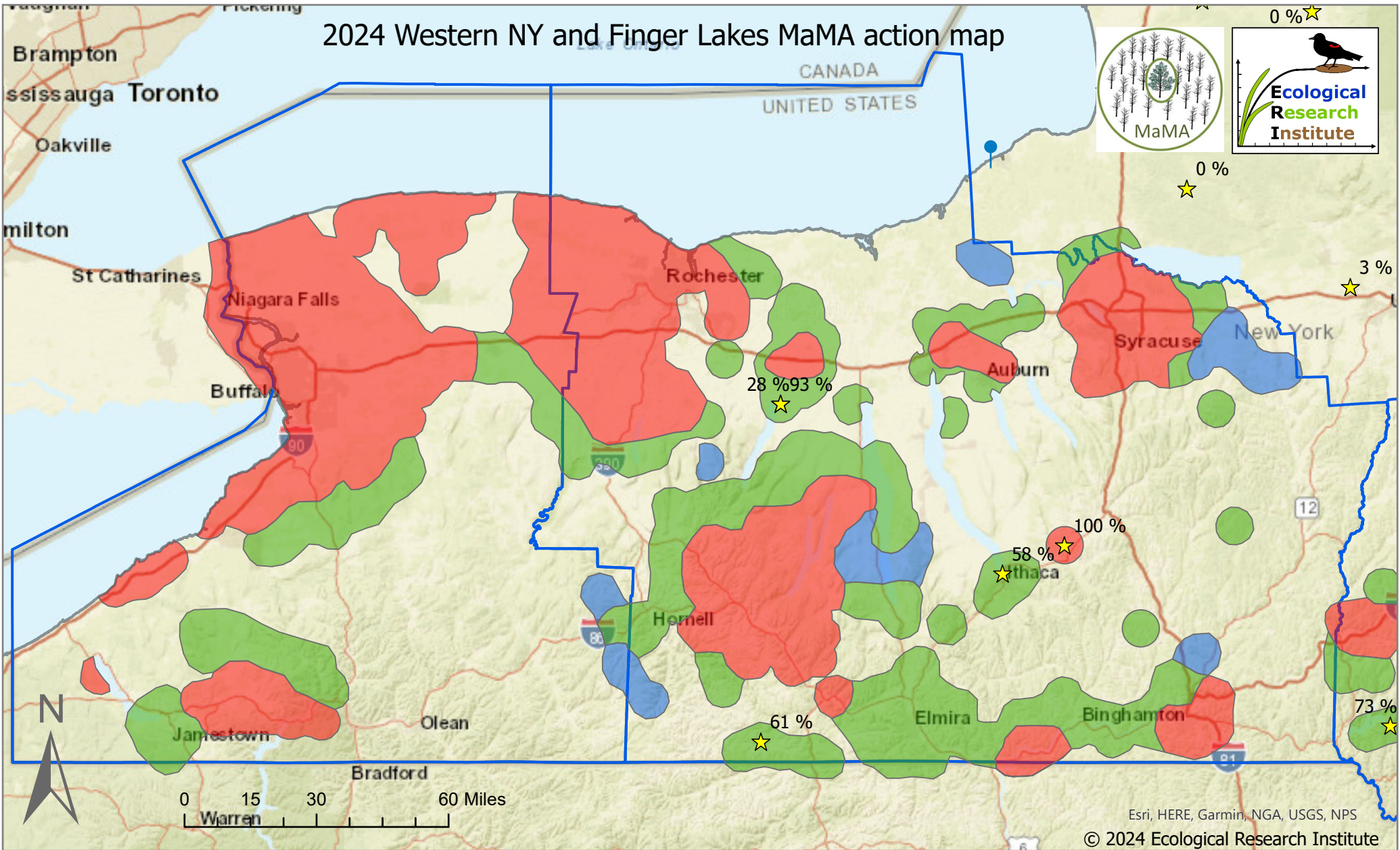
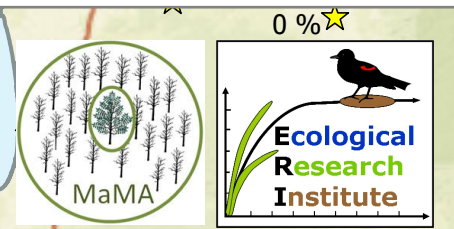


2024 Western NY and Finger Lakes MaMA action map



Actions to do in 2024

EAB infestation data provided by NY DEC and NYNH iMapInvasives.

- Establishing MaMA Mortality Monitoring plots is helpful in any area
 - Areas with no EAB detection; do EAB/Ash Surveys; if ash mortality from EAB found do RAMA assessment
 - Do RAMA assessment (EAB detected 1-3 years ago; ash mortality is predicted 1-50%)
 - Do RAMA assessment; if mortality $\geq 95\%$, search for Lingering Ash (EAB detected 4-7 years ago; ash mortality is predicted 80-100%)
 - Search for Lingering ash (at least 8 years since EAB detection; ash mortality is predicted 100%)
 - Western NY and Finger Lakes PRISM boundaries
 - RAMA (Rapid Ash Mortality Assessment)
 - MaMA Plot
- (% of EAB-induced cumulative ash mortality as of 2023)