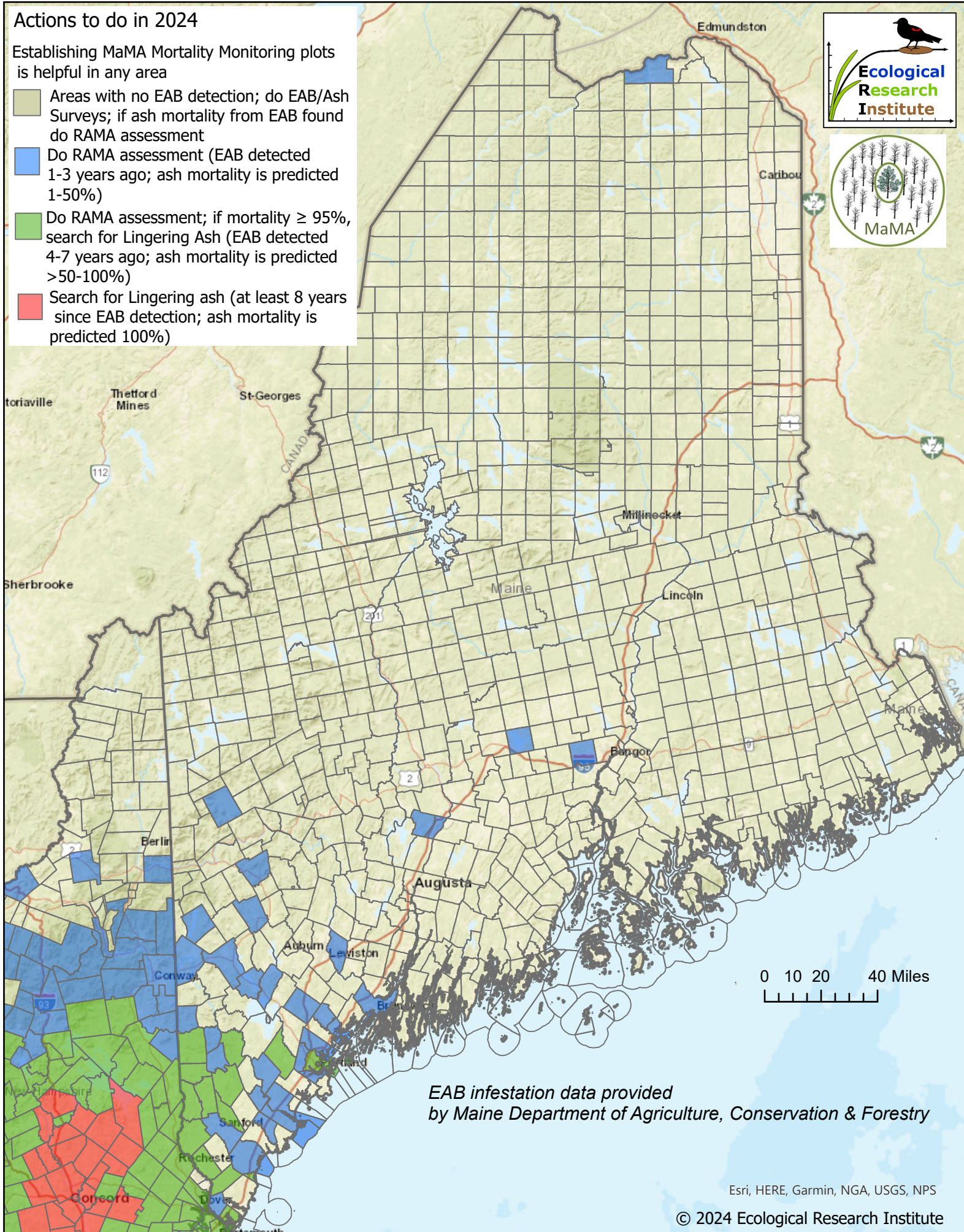
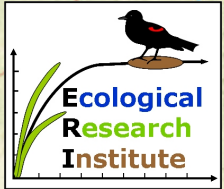


2024 Maine MaMA action map

Actions to do in 2024

Establishing MaMA Mortality Monitoring plots is helpful in any area

- Areas with no EAB detection; do EAB/Ash Surveys; if ash mortality from EAB found do RAMA assessment
- Do RAMA assessment (EAB detected 1-3 years ago; ash mortality is predicted 1-50%)
- Do RAMA assessment; if mortality $\geq 95\%$, search for Lingering Ash (EAB detected 4-7 years ago; ash mortality is predicted $>50-100\%$)
- Search for Lingering ash (at least 8 years since EAB detection; ash mortality is predicted 100%)



EAB infestation data provided by Maine Department of Agriculture, Conservation & Forestry

Esri, HERE, Garmin, NGA, USGS, NPS

© 2024 Ecological Research Institute