

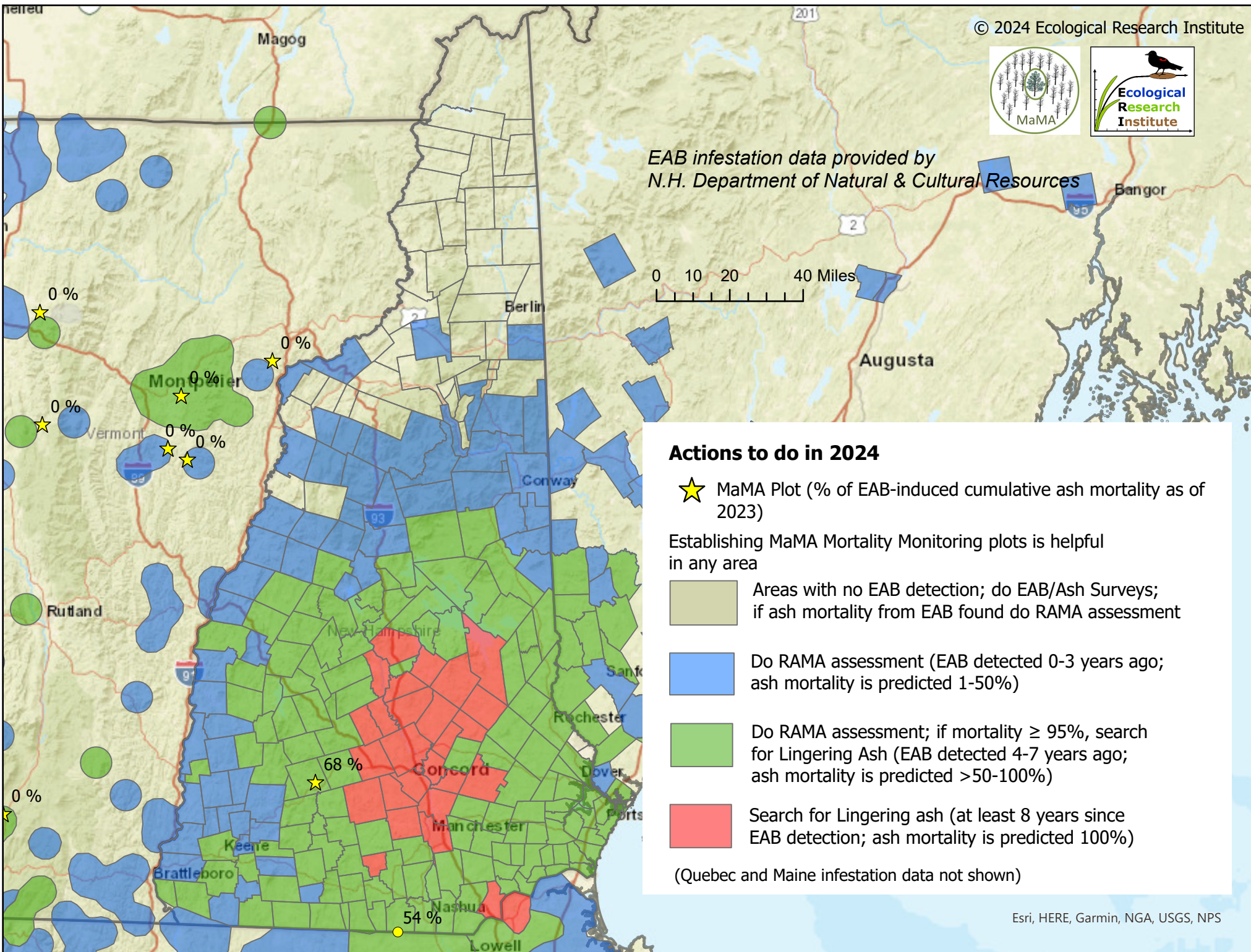
2024 New Hampshire MaMA action map

© 2024 Ecological Research Institute



EAB infestation data provided by
N.H. Department of Natural & Cultural Resources

0 10 20 40 Miles



Actions to do in 2024

★ MaMA Plot (% of EAB-induced cumulative ash mortality as of 2023)

Establishing MaMA Mortality Monitoring plots is helpful in any area

Areas with no EAB detection; do EAB/Ash Surveys; if ash mortality from EAB found do RAMA assessment

Do RAMA assessment (EAB detected 0-3 years ago; ash mortality is predicted 1-50%)

Do RAMA assessment; if mortality $\geq 95\%$, search for Lingering Ash (EAB detected 4-7 years ago; ash mortality is predicted $>50-100\%$)

Search for Lingering ash (at least 8 years since EAB detection; ash mortality is predicted 100%)

(Quebec and Maine infestation data not shown)