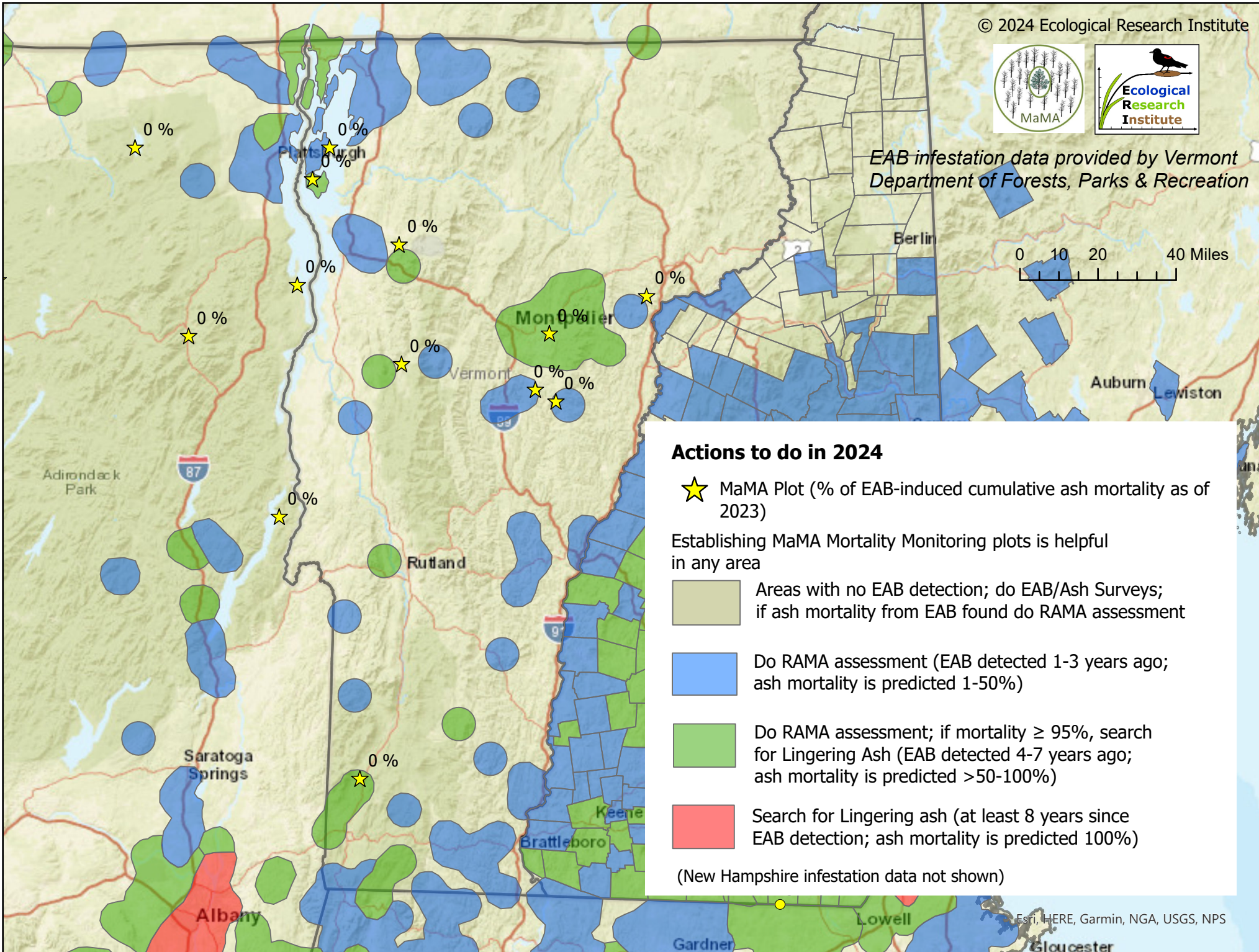
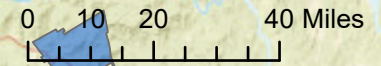


2024 Vermont MaMA action map

© 2024 Ecological Research Institute



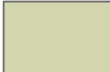
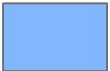


EAB infestation data provided by Vermont Department of Forests, Parks & Recreation



Actions to do in 2024

★ MaMA Plot (% of EAB-induced cumulative ash mortality as of 2023)

Establishing MaMA Mortality Monitoring plots is helpful in any area

-  Areas with no EAB detection; do EAB/Ash Surveys; if ash mortality from EAB found do RAMA assessment
-  Do RAMA assessment (EAB detected 1-3 years ago; ash mortality is predicted 1-50%)
-  Do RAMA assessment; if mortality $\geq 95\%$, search for Lingering Ash (EAB detected 4-7 years ago; ash mortality is predicted $>50-100\%$)
-  Search for Lingering ash (at least 8 years since EAB detection; ash mortality is predicted 100%)

(New Hampshire infestation data not shown)

Esri, HERE, Garmin, NGA, USGS, NPS

Gloucester