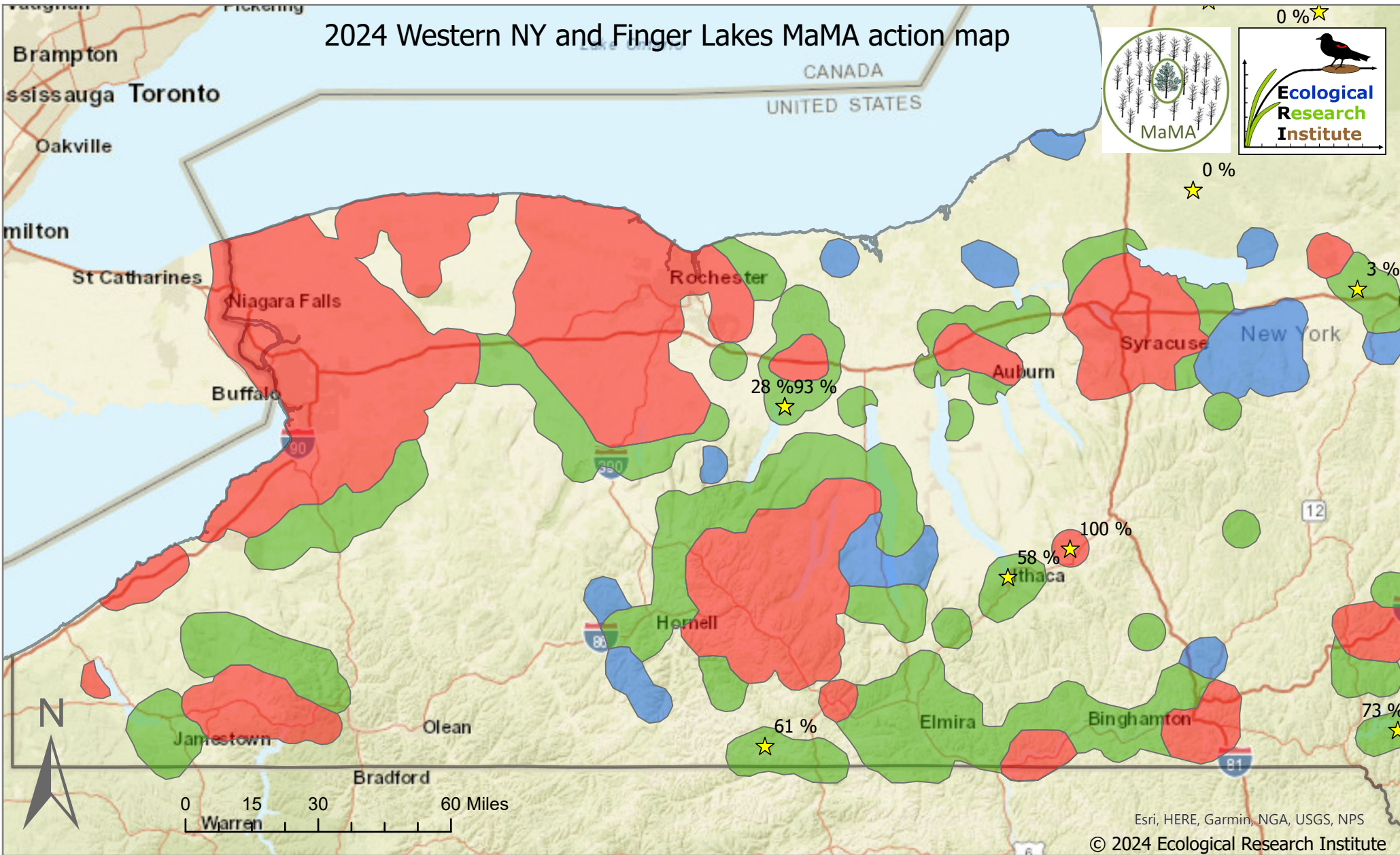
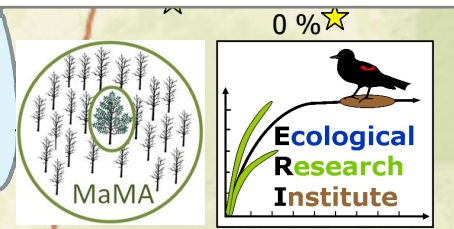


# 2024 Western NY and Finger Lakes MaMA action map



Esri, HERE, Garmin, NGA, USGS, NPS  
© 2024 Ecological Research Institute

## Actions to do in 2024

*EAB infestation data provided by NY DEC and NYNH iMapInvasives.*

Establishing MaMA Mortality Monitoring plots is helpful in any area

- Areas with no EAB detection; do EAB/Ash Surveys; if ash mortality from EAB found do RAMA assessment
  - Do RAMA assessment (EAB detected 1-3 years ago; ash mortality is predicted 1-50%)
  - Do RAMA assessment; if mortality  $\geq 95\%$ , search for Lingering Ash (EAB detected 4-7 years ago; ash mortality is predicted 80-100%)
  - Search for Lingering ash (at least 8 years since EAB detection; ash mortality is predicted 100%)
  - Western NY and Finger Lakes PRISM boundaries
  - RAMA (Rapid Ash Mortality Assessment)
  - MaMA Plot
- (% of EAB-induced cumulative ash mortality as of 2023)